

# Midori & Friends

inspiring children through music

Program  
Report  
2005/2006  
Season





Since its founding in 1992, Midori & Friends has been providing high quality music education free of charge to thousands of underserved New York City children.

Through our partnerships with New York City public schools and community organizations, we aspire to ignite a passion for music in children, contribute to their personal and social development, and most importantly, awaken young people to the power of their own creativity.

On behalf of everyone at Midori & Friends, I extend my deepest appreciation to you for helping our children discover wonderful new worlds through music.

**Midori**

“Dear Midori, I think your pieces were great. I would give you three thumbs up but I only have two! When you played the Beethoven sonata it was so fast and exciting. I couldn’t breathe.”

-5th grader, P.S. 42M, Chinatown

IN 2005/2006, MIDORI & FRIENDS SCHOOL PROGRAMS INSPIRED...

**8,710** K-12 public schoolchildren in **44** partner schools in New York City

**1,400** children  
Adventures in Sound

**950** children  
Adventures in Making Music

**460** children  
After-School Adventures

**5,900** children  
Adventure Concerts and  
Musical Learning Adventures

## Recent Initiatives Enhance Our Programs



### Adventures in Making Music: Guitar

Thanks to the generosity of John and Joan D'Addario and guitar donations from the Yamaha Corporation of America, we were able to add guitar instruction to our Adventures in Making Music program. Beginning in the spring of 2006, 65 students at P.S. 72M and I.S. 229X learned how to play guitar in group sessions. Guitar students from this inaugural program performed at the Children's Music Festival at Symphony Space and were featured in a segment aired on Telemundo.

"I want to thank you for all those music performances because they were really fun and taught me a lot!"

-3rd grader, P.S. 85X, Fordham



### Musical Learning Adventures

This performance/workshop series encourages creative expression and furthers cultural and artistic learning in conjunction with the Adventure Concert Series. Each Musical Learning Adventure program begins with an in-school or family concert and concludes with a performance that gives students and parents an opportunity to perform side-by-side with presenting artists. In addition to our CASA funded Musical Learning Adventures, students at P.S. 42 in Chinatown had the opportunity to work with Fiesta Flamenca.



### Community Concerts at the Ronald McDonald House

Through the initiative and generosity of Barbara Eig, we launched a series of concerts for the children and families residing at Ronald McDonald House. Midori & Friends presented three concerts to residents and guests featuring the groups Mercury Brass Quintet, Drum Café, and Mexico Beyond Mariachi.

## CASA Musical Learning Adventures



Funded by the New York City Council's CASA program, we launched Musical Learning Adventures at four new partner schools in the Bronx, Brooklyn, and Queens.

Each Musical Learning Adventure began with a concert for students in first through fourth grades. The opening concerts introduced the children to artists, music, and songs of Africa, Brazil, Mexico, and Spain. Students then experienced eight weeks of visits by the presenting artists. In these workshops, students investigated the traditions, values, and artistic expressions of the particular culture under study. At P.S. 279 in the Bronx, children made mbiras (African thumb pianos) and learned songs and chants connected to the history of Africa's various countries. At P.S. 163 in Brooklyn, they learned techniques for playing and improvising on West African djembe drums. First graders at P.S. 55 in Queens enjoyed Mexican concerts and

workshops while second graders participated in Flamenco dance, song, and music. Artists at J.H.S. 190 in Queens, taught seventh graders about the history and skills of Capoeira, an Afro-Brazilian art form.

Student excitement was clearly visible at the concerts

**Over time, a dynamic relationship between the artists and students developed.**

that took place at the end of each Musical Learning Adventure. Many parents attended these final performances, which featured students playing, singing, and dancing with the artists.



CASA programs were generously supported through \$25,000 appropriations from New York City Council Members Maria Baez, Vincent Gentile, Thomas White, and Melinda Katz.

**"The students looked forward to our weekly sessions with Afro-Brazil Arts. I truly believe some of them will continue practicing what they learned during these ten sessions. They enjoyed it immensely!"**

-7th grade teacher, J.H.S. 190Q, Forest Hills



a musical celebration by and for children



Featuring Students From:

P.S. 42, Chinatown  
P.S. 72, East Harlem  
P.S. 98, Douglaston, Queens  
P.S. 139, Rego Park, Queens

P.S. 180, Harlem  
I.S. 229, Morris Heights, Bronx  
P.S. 243, Bedford-Stuyvesant,  
Brooklyn

Landmark High School,  
Manhattan  
Coalition School for Social  
Change, Manhattan

Leadership sponsors:

JPMorgan Chase Foundation | The Peter Jay Sharp Foundation | C.J. Huang Foundation

## About The Children's Music Festival



The Midori & Friends 1st Annual Children's Music Festival involved hundreds of children, parents, and educators in music, dance, and set décor workshops and presented their accomplishments in a culminating concert that took place at Symphony Space in Manhattan.

**Featuring music by and for kids, the festival fostered involvement, unity, and pride in all participants and strongly affirmed the importance of music in the lives of our city's children.**

Parents, children, school administrators, as well as the general public came from throughout New York City to attend the standing-room only concert.

**"The festival was a spectacular experience for the students and me! Thank you for giving our students this wonderful opportunity. I look forward to working with Midori & Friends next year."**

*-Principal, P.S. 98, Douglaston*

### THE CHILDREN'S MUSIC FESTIVAL AT A GLANCE

#### **Who:**

Midori & Friends, in collaboration with selected partner schools throughout the city

#### **What:**

Music and art workshops in 9 schools and a culminating performance at Symphony Space with student performances and participatory pieces with professional musicians

#### **Why:**

To provide New York City public schoolchildren with an opportunity to express themselves musically in a public theater with professional musicians

#### **When:**

April–June 2006: in-school workshops  
June 24, 2006: culminating festival concert

#### **Where:**

Workshops in 9 schools in 4 boroughs  
Performance at Symphony Space  
(Broadway & 95th Street, Manhattan)

#### **With:**

137 student performers  
860 standing room only audience  
350 families of students  
57 communities in attendance  
150 students involved in stage décor

## In-School Workshops



### Creative Composition

Composer and jazz artist Joe Fiedler was commissioned to create a contemporary suite on the theme of instruments and music, featuring songs about the drum, trombone, piano, and saxophone. Fiedler worked with children at four schools to develop individual pieces that reflected their own unique voices. The four schools came together for the first time at Symphony Space to form an inter-elementary chorus and premiere *It's Instrumental!*

### Stage Décor Workshops

Large tapestries with music themes were created by students and families at four schools during half-day and weekend workshops led by master quilter Diane Holland. Members of I.S. 229's art club and special needs students worked with art specialist Gil Fletcher to design and paint giant musical banners. The tapestries and paintings were prominently displayed as set décor at the festival's culminating concert.

### Staging & Presentation

Working with a professional director and school-based music-specialists, children prepared for their performance at Symphony Space. The workshops focused on stage presence, movement, and expression.

## The Symphony Space Performance



### Hosted by

Lynda Baquero  
Newschannel 4 Anchor

### Professional Performing Artists & Ensembles

DrumCafé

Fiesta Flamenca

David Gonzalez, Musical Storyteller

Marcus Rojas, Tuba

*It's Instrumental!* inter-elementary choir and combo



### Students/Performers

Choral: 110

Flamenco Dancers: 10

Guitar: 10

Drums: 6

Piano: 1



## Midori & Friends College Scholarships

After a highly spirited performance at the festival by the Landmark Coalition Jazz Duo, Executive Director Judi Linden presented Luis Fernandez and John Rodriguez with our first college scholarships.

These two talented seniors have participated for four years in the Jazz Program at Landmark and Coalition High schools, which is generously sponsored by Bette Midler. We are thrilled these two young men will be continuing their musical studies: Luis in jazz piano at City College and John in sound engineering at Queensborough Community College. The program, which enrolls over 25 students yearly, fosters a love and involvement in jazz and music.

“The students and their families are extremely grateful for the assistance that these scholarships will provide when the boys enter college in the fall. Creation of these scholarships in response to their financial needs is testament to your generosity and caring.”

-Eileen Miller, Principal, The Coalition School for Social Change

## MIDORI & FRIENDS 1ST ANNUAL CHILDREN'S MUSIC FESTIVAL SUPPORTERS

With special appreciation to...

### Leadership Sponsors

JPMorgan Chase Foundation, The Peter Jay Sharp Foundation, C.J. Huang Foundation

### Champions for Children

Andrew Sabin, Joan & Jack Saltz, Roger & Jerry Tilles

### Our Friends

Joan Arnow, Phylis & Michael Bamberger, Alvin Begleiter & Binnette Lipper, Elizabeth & Jay Chandler, Merry De Phillips, Sally Fischer & Elliot Upton, Antonia & George Grumbach Jr., Leopold Godowsky III, Ms. Mary Gurney, Nikos Hecht, Dr. and Mrs. Joseph Levy, Mr. A.J. Lorie, Jay Lubell, Robert B. Mellins, Clara G. Onishi, Mort & Sandy Porwick, Andrew & Andrea Potash, Sylvia Rosenberg, Ava Seave, Dr. & Mrs. Abraham Sunshine.

Also, a special thanks to our in-kind donors: FreshDirect, Barnes and Noble, the Children's Museum of the Arts, ICM Artists, Ltd., Simon & Schuster, Toys 'R Us, and Kate Begbie for her design work.

## What is the Four Tier Program?



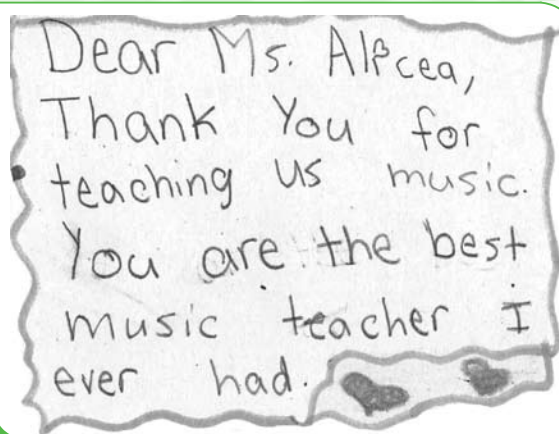
**Midori & Friends programmatic centerpiece is a combination of programs for children from kindergarten through 12th grade.**

Each tier is a specialized musical program that either stands independently or is combined with one or more additional tiers. The benchmarks and goals of the New York City Department of Education's Blueprint for Teaching and Learning in the Arts are integrated into the curricula for each tier.



### Tier One

## Adventures in Sound

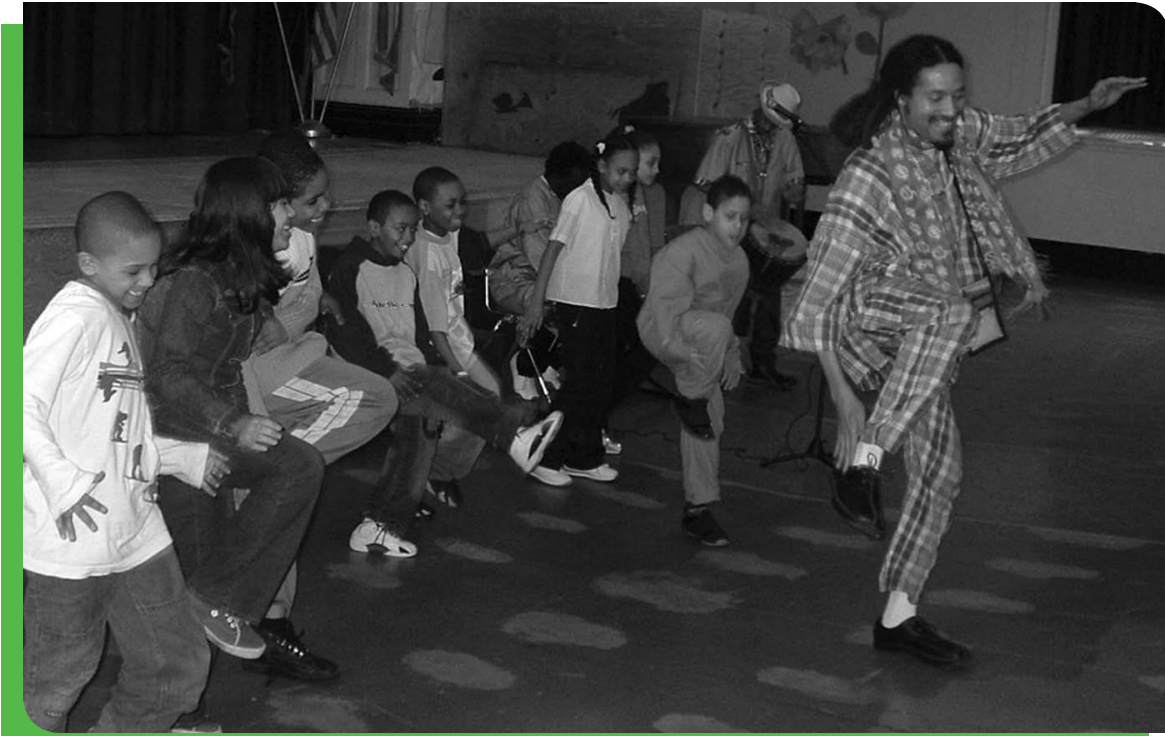


**This introductory program for kindergarten through second graders provides a fun-filled orientation to the basic elements and different styles of music in long-term classroom residencies.**

The generosity of The ASCAP Foundation Irving Caesar Fund made it possible for us to launch our Song Creations curriculum this season. Students explored musical expression, timbre, pitch, and rhythm. Using traditional and non-traditional notation, students created a composition, drawing upon poetry and works of other cultures. In the fall of 2005, Midori & Friends presented a professional development session for Adventures in Sound teaching artists to introduce them to this new curriculum. The session explored how singing and song writing can be used to enhance academic curricula and promote literacy, inter-personal skills, and self-expression.



## Adventure Concert Series



**In lively, multicultural in-school and after-school/evening family concerts, students learned about world musical traditions.**

Additionally, the Adventure Concert Series features world renowned guest artists, such as Midori and others, many of whom serve on our Artistic Advisory Committee. This year, Midori introduced the concept of “carpet concerts.” The carpet concerts provided children with an opportunity to experience music in a more intimate setting.

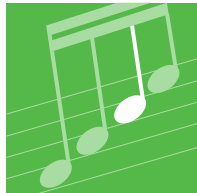


### FEATURED ENSEMBLES

- |                                                      |                                                         |
|------------------------------------------------------|---------------------------------------------------------|
| Afro Brazil Arts                                     | Jazz at Lincoln Center                                  |
| Anh Tai Tran<br>(classical guitarist)                | Kids Play for Kids                                      |
| Doc Wallace Trio<br>(Texas-style fiddling and swing) | Melody of Dragon<br>(traditional Chinese ensemble)      |
| Drum Café<br>(drumming group)                        | Mercury Brass                                           |
| Fiesta Flamenca                                      | Mexico Beyond Mariachi                                  |
| ForestDance<br>(African percussion trio)             | Midori                                                  |
| Imani Winds                                          | Young Concert Artists—Naoko<br>Takada (marimba soloist) |
| Jazzamatazz                                          | Un Mundo Ensemble<br>(Brazilian ensemble)               |

## Tier Three

## Adventures in Making Music



Through long-term residency programs, children learned to sing or play guitar, violin, cello, flute, clarinet, saxophone, trumpet, trombone, or percussion in twice weekly small group lessons.

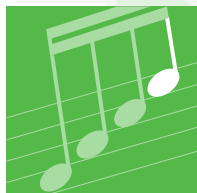
**At the end of the program students read and created music, played melodies, and explored their own expressive styles.**

Renowned guest artists also visited classrooms, playing for the children and sharing stories about their lives and work.

**“The African music was the best! Me and my friend were dancing.”**

**-3rd grader, P.S. 85X, Fordham**

## Tier Four

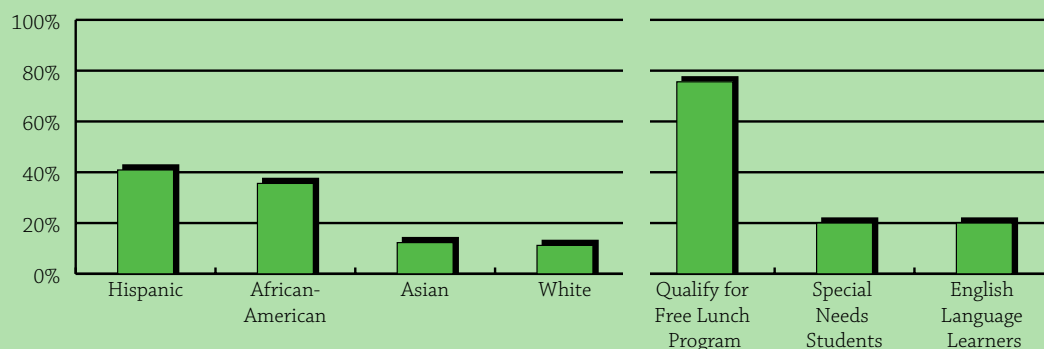


## After-School Adventures

**In After-School Adventures children performed in ensembles, learned to play instruments, or enjoyed workshops and concerts by professional ensembles.**

In addition to learning how to play and appreciate music, these programs provided young people with opportunities for personal and social development. In particular, ensemble work helped children develop communication and other important life skills.

**CHILDREN  
WE SERVED  
2005/2006**



# Parent & Family Involvement



Parents and families play an important role in children’s education.

To encourage their participation, Midori & Friends held parent orientation meetings and offered family take-home activities for Making Music students, provided pre-concert family workshops in conjunction with Family/Community Adventure Concerts, presented side-by-side music workshops for parents and children, launched parent newsletters, developed Midori & Friends Open Classroom Week, presented an annual musical workshop and breakfast for Parent Coordinators, and distributed information to parents in various languages.

## PROGRAMS BY SCHOOL

	Adventures in Sound/First A.I.S.	Adventure Concert Series	Making Music	After-School Adventures	Musical Learning Adventure	Children’s Music Festival	Explore-A-Door	Guitar Program
P.S. 130M / P.S. 97Q	✓							
P.S. 91Q	✓	✓						
P.S. 239Q	✓		✓					
P.S. 243B	✓	✓	✓	✓		✓	✓	
I.S. 49S / P.S. 198M / P.S. 6B / P.S. 54B / P.S. 203B / P.S. 249B / P.S. 149Q / P.S. 182Q / P.S. 232Q, I.S. 126Q / J.H.S. 157Q / Peninsula Prep Academy / C.E.S. 6X / P.S. 85X / C.E.S. 230X / I.S. 49			✓					
P.S. 102B		✓	✓	✓				
P.S. 98Q / P.S. 139Q		✓				✓		
Wingate HS / HS for Public Service / Int’l Arts & Business HS / School for Human Rights / School for Democracy & Leadership / P.S. 48Q / P.S. 229Q / P.S. 70X			✓	✓				
I.S.229X / P.S. 72M		✓	✓			✓		✓
P.S. 180M		✓	✓			✓	✓	
P.S. 210M / Brandeis HS / Landmark HS / Coalition HS			✓					
P.S. 160Q			✓	✓				
P.S. 42M						✓	✓	
P.S. 163B / P.S. 55Q / J.H.S. 190Q / P.S. 279X						✓		

## Midori & Friends Partnerships

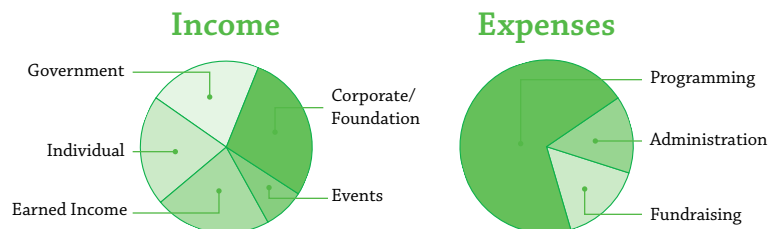
Our programs are customized to meet the needs of individual partner schools. As a catalyst for change, we help transform underperforming schools into vibrant learning communities. We are proud of the support we receive from principals, teachers, parents, administrators, students, and surrounding communities.

## Organizational Collaborations

- Afro Brazil Arts
- Drum Café
- HeartShare Human Services of New York
- Jamaica Center Improvement Association
- Jazz at Lincoln Center
- The Juilliard School – Pre-College Division
- Maspeth Town Hall
- Ronald McDonald House
- Sports & Arts in the Schools Foundation
- Young Concert Artists

## Support from Private & Public Donors

Midori & Friends is grateful to the new foundations and corporations that have recently joined our circle of friends. Without this funding, along with the essential support of our long-time donors, Midori & Friends could not implement its programs in schools city-wide.



## Watch for these Exciting Initiatives



### Explore-A-Door

This season, Midori & Friends will launch a new project called Explore-A-Door in Bedford-Stuyvesant and Harlem schools. Explore-A-Door, funded by Bank of America, with in-kind donations from Hohner Inc., is a resource center housed in school libraries or specially designated rooms. Consisting of a large cabinet filled with small instruments, poetry, fiction, and non-fiction books about music and musicians, as well as CD's, and other educational tools, Explore-A-Door is designed to link music and literacy through fun-filled, hands-on activities. We will lead Professional Development for classroom teachers on innovative ways of integrating Explore-A-Door into the curriculum.

### Professional Development

After two years of successful professional development, made possible, in part, with generous support from the Dana Foundation, we will be adding a mentoring component to our Professional Development program. Additionally, we are looking forward to providing workshops for teachers, administrators, and other school staff on creative ways of bringing music into the classroom.



### Out-of-School Learning

Increasing requests for positive youth activities from principals and others are prompting us to develop a broader plan for out-of-school learning. Midori & Friends is exploring weekend and summer learning programs, as well as ways to enhance our existing after-school and community programs.

...and of course, watch for Midori & Friends' 2nd Annual Children's Music Festival

# Midori & Friends Donors 2005/2006 Season

## Musical Benefactors

### \$25,000 & up

John & Joan D'Addario  
The Dana Foundation  
Alan & Laraine Fischer  
The Grand Marnier Foundation  
JPMorgan Chase Foundation  
MetLife Foundation  
Bette Midler  
National Endowment for the Arts  
New York City Council  
New York City Department of Cultural Affairs  
New York City Department of Education  
The Pinkerton Foundation  
The Peter Jay Sharp Foundation  
The Starr Foundation  
The United States-Japan Foundation

## Musical Sponsors

### \$10,000 to \$24,999

The ASCAP Foundation  
Irving Caesar Fund  
Bank of America Foundation  
Carnegie Corporation of New York  
Mary Flagler Cary Charitable Trust  
Jean and Louis Dreyfus Foundation  
Gatewood Foundation  
Harman Family Foundation  
Hyde and Watson Foundation  
New York Community Trust  
Bonnie & Richard Reiss  
Billy Rose Foundation  
Helena Rubinstein Foundation  
The Scherman Foundation  
Geeta Sharma, MD & Rajeev Narang  
SONY USA Foundation  
Tanaka Memorial Foundation

## Musical Donors

### \$5,000 to \$9,999

Anonymous  
The Bay and Paul Foundations  
Con Edison  
Barbara & Norman Eig  
Ann and Gordon Getty Foundation  
Michael Harpe & Deborah Winshel  
C.J. Huang Foundation  
ICM Artists, Ltd.  
The Jaffe Foundation

Jamaica Center Improvement Association  
Gertrude Jeckyl Foundation  
Peter & Yuriko Lederer  
The Mitsui USA Foundation  
Morgan Stanley Foundation  
New York State Council on the Arts  
Joan & Jack Saltz  
Lily Tanaka  
Washington Mutual  
West Side Children's Fund

## Musical Supporters

### \$1,500 to \$4,999

Emanuel & Yoko Ax  
Mr. & Mrs. Michael A. Bamberger  
H. Thomas Beck  
Alvin Begleiter & Binnette Lipper  
Leonard Bernstein Family Foundation  
Elizabeth & Jay Chandler  
Richard & Mica Hadar Foundation  
Andrew Herz  
Jill Klinow Jaffe & Robert L. Jaffe  
Valery & Joseph Levy  
Judi & Jay Linden  
Jay Lubell  
Junji & Yuko Masuda  
Kurt & Tomoko Masur  
Clara G. Onishi  
William Petschek Family Foundation  
Pumpkin Foundation  
Rush Philanthropic Arts Foundation  
Roger & Jerry Tilles  
Dr. & Mrs. Clyde Wu  
The Zankel Fund

## Musical Friends

### \$500 to \$1,499

Joan Arnow  
Judith Biggs  
Gail Binderman  
Louis & Ruth Brause  
Astrid Delafield  
Herbert & Cynthia Fields  
Steven & Mie Frautschi  
Madeline Glick  
Antonia & George J. Grumbach Jr.  
Nikos Hecht  
Paul Huang  
Andrew & Wendy Lacey

Marie Langlois  
Dr. Evelyn Lipper & Dr. Bill Speck  
Sandy Mintz  
Mizuho Corporate Bank, Ltd.  
Charles & Carol Mutterperl  
Paula Oreck  
Lemont Richardson Foundation  
Drs. Ben & A. Jess Shenson DA Fund  
Vera Stern  
Svetlana & Herbert Wachtell

## Musical Associates

### \$499 & below

Anonymous  
Duffie Adelson  
K. Tucker & Karen Andersen  
Robert & Deanna Adler  
Dr. Robert & Mrs. Joyce Bartolomeo  
Gregory & Rachel Barton Pine  
Mr. & Mrs. Franklin Bass  
David Caplan  
David & So Hyan Choe  
Owen & Marianne Davis  
Merry De Phillips  
Marie & Robert Delaney  
Mr. Stephen Esko  
Harriet Feinberg  
Ms. Carmen Findlay  
Sally Fischer & Elliot Upton  
Jack & Anne Fried  
Carl Glick  
Leopold Godowsky III  
May Gruber  
Ms. Mary Gurney  
Halpern Family  
Kitty Carlisle Hart  
David & Ruth Hirsh  
Marilyn Horne  
Mrs. Francis J. Houghton, Jr.  
Ms. Etsuko Jennings  
Bruce & Sandy Kafenbaum  
Charles J. Kallick, MD  
& Benna Kallick, PhD  
Lore Lennon  
Dick & Polly Leonard  
Mr. & Mrs. Lester Lieberman  
Philip & Greta Loomis  
A.J. Lorie  
Ms. Ellen Love  
Robert McDonald

## Musical Associates (continued)

Dr. & Mrs. Robert Mellins  
Kuniko Minakawa  
Ani & Bernie Mindich  
Kanji Miyao  
Morse Family Foundation  
Alan & Barbara Nicoll  
Frederick Noonan  
Mr. Bob Olivori  
Mort & Sandy Porwick  
Andrew & Andrea Potash  
Constance M. Robinson

Sylvia Rosenberg  
Daniel Rothmuller  
Estelle Schecter  
Ms. Joan Schmitz  
Ava Seave  
Nancy Sherman  
Mr. & Mrs. Demetrios Siatos  
Ms. June Silleck  
Harold & Emily Sosnow  
Mrs. Karen L. Stone  
Dr. and Mrs. Abraham Sunshine  
T.I.C. Group  
Mr. & Mrs. Alfred W. Teichmeier

Howard & Robin Terebelo  
Mr. Alec C. Treuhaft  
The Ungar Family Foundation  
Lee Vance & Cynthia King Vance  
Douglas & Catherine Wheeler  
Ellen Young & Ira Greenberg  
Michael & Sharon Zambrelli  
Richard Zinar

**This list reflects individual  
donations received from  
July 1, 2005 to June 30, 2006**

We are also grateful to the members of the New York City Council, Honorable Christine Quinn, Speaker, for their generous support of Midori & Friends programs, as well as to these individual City Council Members and State Legislators for their support of programs in their districts:

### Members of the New York City Council

Hon. Lewis Fidler,  
Chair of Youth Services  
Hon. Robert Jackson,  
Chair of the Education Committee  
Hon. Domenic Recchia,  
Chair of the Cultural Affairs Committee  
Hon. Joel Rivera,  
Majority Leader  
Hon. David Weprin,  
Chair of the Finance Committee

Hon. Joseph P. Addabbo, Jr.  
Hon. Maria Baez  
Hon. Vincent Gentile  
Hon. Melinda Katz  
Hon. G. Oliver Koppell  
Hon. Thomas White, Jr.

### Members of the New York State Assembly

Hon. Jonathan Bing  
Hon. Vincent Ignizio  
Hon. Rhoda Jacobs  
Hon. Ivan C. Lafayette  
Hon. Catherine Nolan

### Members of the New York State Senate

Hon. Diane Savino  
Hon. Malcolm A. Smith

## MIDORI & FRIENDS BOARD AND STAFF

### Founder & President

Midori

### Chairman

Alan Fischer

### Chairman Emeritus

Peter D. Lederer

### Board of Directors

Barbara Eig  
Laraine Fischer  
Tadao Fujimatsu  
Peter Glaser  
Setsu Goto  
Byron Gustafson  
Michael Harpe  
Andrew Herz  
Jill Klinow Jaffe  
Bonnie Reiss  
Dr. Geeta Sharma  
Makiko Tanaka

### Artistic Advisory Committee

Emanuel Ax  
Yefim Bronfman  
Regina Carter  
Eliot Fisk  
Kitty Carlisle Hart  
Wynton Marsalis  
Zubin Mehta  
Audra McDonald  
Achinoam Nini  
Mark O'Connor  
Maurice Sendak  
Dawn Upshaw

### Board of Advisors

Duffie Adelson  
Judy Eisman  
Maxine Greene  
Rita Polidi  
Suzanne Ponsot  
Christopher Ponsot

### Staff

#### Executive Director

Judi Linden

#### Program Associate

Marte Siebenhar

#### Executive Assistant

Michele Lassiter

#### Education Consultant

Paula Chan Bing

#### Program Consultant

Kristin Champa

#### Development Consultants

Ellen Young  
Ellen Mittenthal

#### Finance Consultant

Lisa Weir

#### Special Projects/Professional Development Consultant

Margaret Wolfson

#### Program Coordinators

Joe Fiedler  
Sarah Perry

“I can’t believe I did that! Are we going to do it again?”

-Children’s Music Festival student performer, P.S. 180M, Harlem

## MIDORI & FRIENDS PARTNERS 2005/2006

